

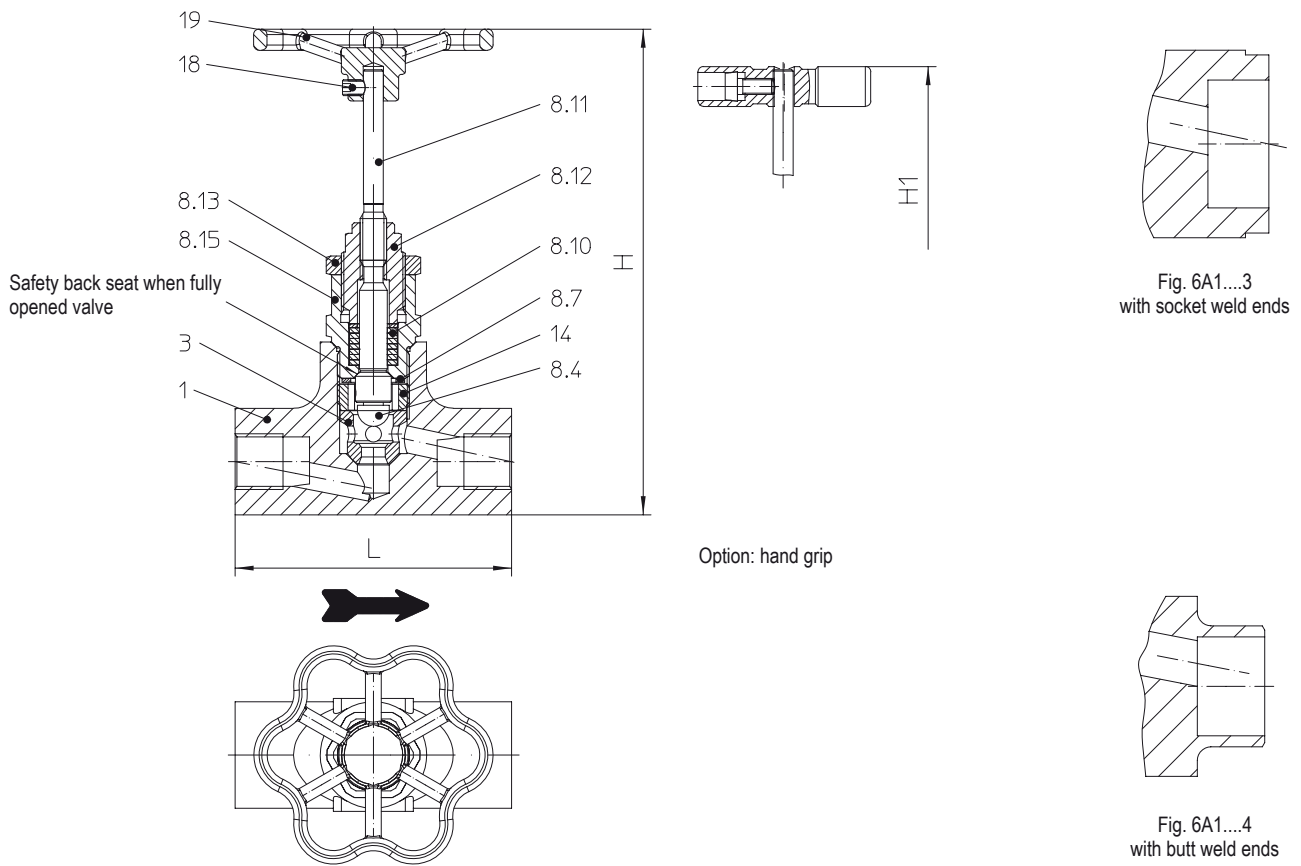
Stop valve with gland seal (Forged steel)


Fig. 6A1...2 with screwed sockets

Figure	Nominal pressure	Material	Nominal diameter	Operating pressure PS	Inlet temperature TS
Fig. 45.6A1	PN40	1.0460	DN15-25 / NPS1/2" - 1"	32 barg	250 °C
				14,5 barg	450 °C
Fig. 55.6A1	PN40	1.4541	DN15-25 / NPS1/2" - 1"	32 barg	350 °C
				22 barg	400 °C

Types of connection	Other types of connection on request.
<ul style="list-style-type: none"> Screwed sockets2 _____ Rp thread acc. to DIN EN 10226-1 or NPT thread acc. to ANSI B1.20.1 Socket weld ends3 _____ acc. to DIN EN 12760 Butt weld ends4 _____ Weld preparation acc. to EN ISO 9692 identification No. 1.3 and 1.5 (Note restriction on operating pressure / inlet temperature depending to design!) 	
Features:	
<ul style="list-style-type: none"> Low-maintenance stop valves to shut off water, steam, etc. Safety back seat when fully opened valve Bonnet made of stainless steel Economic on-site handling and long life (through forged steel and metallic sealing...) 	
Options:	
<ul style="list-style-type: none"> Throttling plug Hand grip 	

Types of connection	Screwed sockets Socket weld ends		Butt weld ends		
	15	20	15	20	25
DN	15	20	15	20	25
NPS	1/2"	3/4"	1/2"	3/4"	1"

Face-to-face acc. to data sheet resp. customer request						
L	(mm)	104	104	104	104	104

Dimensions						
H	Standard	(mm)	163	163	163	163
H1	Option: Hand grip	(mm)	148	148	148	148

Kvs-value						
Kvs-value	(m³/h)	1,7	1,7	1,7	1,7	1,7

Weights						
Fig. 6A1 (approx.)	Standard	(kg)	1,4	1,2	1,4	1,2
	Option: Hand grip	(kg)	1,7	1,5	1,7	1,5

Parts						
Pos.	Sp.p.	Description	Fig. 45.6A1	Fig. 55.6A1		
1		Body	P250GH, 1.0460	X6CrNiTi18-10, 1.4541		
3	x	Seat	X8CrNiS18-9, 1.4305			
8	x	Assembly stop valve, cpl.	Stainless steel			
8.4		Valve ball	X39CrMo17-1+QT, 1.4122+QT			
8.7		Sealing ring	Graphite			
8.10		Packing ring	Pure graphite			
8.11		Stem	X2CrNiMo17-12-2, 1.4404			
8.12		Threaded bush	X8CrNiS18-9, 1.4305			
8.13		Safety nut	X8CrNiS18-9, 1.4305			
8.15		Fitting	X8CrNiS18-9, 1.4305			
14		Banjo bolt	X8CrNiS18-9, 1.4305			
18	x	Thread pin	A2-70			
19	x	Hand wheel	GX5CrNiMo19-11-2, 1.4408			
		Other interior parts	Stainless steel			
	L Spare parts					

Information / restriction of technical rules need to be observed!

Operating and installation instructions can be downloaded at www.ari-armaturen.com.

Resistance and fitness must be verified (contact manufacturer for information, refer to Product overview and Resistance list).



Technology for the Future.
 GERMAN QUALITY VALVES

ARI-Armaturen Albert Richter GmbH & Co. KG, D-33750 Schloß Holte-Stukenbrock,
 Tel. +49 52 07 / 994-0, Telefax +49 52 07 / 994-158 or 159 Internet: <http://www.ari-armaturen.com> E-mail: info.vertrieb@ari-armaturen.com