

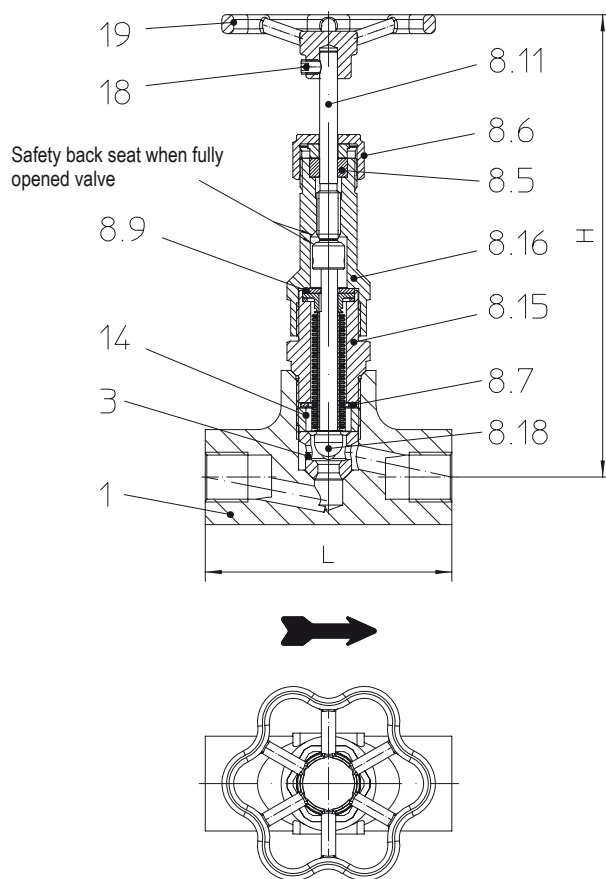
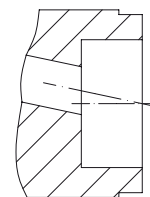
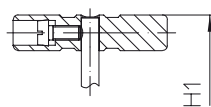
Bellows seal stop valve (Forged steel)


Fig. 6A2...2 with screwed sockets


 Fig. 6A2...3
 with socket weld ends

Option: hand grip

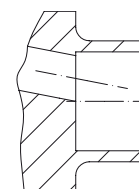

 Fig. 6A2...4
 with butt weld ends

Figure	Nominal pressure	Material	Nominal diameter	Operating pressure PS	Inlet temperature TS
Fig. 45.6A2	PN40	1.0460	DN15-25 / NPS1/2" - 1"	32 barg	250 °C
				14,5 barg	450 °C
Fig. 55.6A2	PN40	1.4541	DN15-25 / NPS1/2" - 1"	32 barg	350 °C
				22 barg	400 °C

Types of connection Other types of connection on request.

- Screwed sockets2 _____ Rp thread acc. to DIN EN 10226-1 or NPT thread acc. to ANSI B1.20.1
- Socket weld ends3 _____ acc. to DIN EN 12760
- Butt weld ends4 _____ Weld preparation acc. to EN ISO 9692 identification No. 1.3 and 1.5
 (Note restriction on operating pressure / inlet temperature depending to design!)

Features:

- Low-maintenance stop valve to shut off water, steam, thermal oil etc.
- Safety back seat when fully opened valve
- Safety stuffing box
- Approval acc. to TA-Luft (TÜV test no. 3837PR18120)
- Anti rotation device for the bellow (Pos. 8.9)
- Bonnet made of stainless steel
- Economic on-site handling and long life (through forged steel and metallic sealing...)

Options:

- Throttling plug
- Hand grip

Types of connection	Screwed sockets Socket weld ends		Butt weld ends		
	15	20	15	20	25
DN					
NPS	1/2"	3/4"	1/2"	3/4"	1"

Face-to-face acc. to data sheet resp. customer request						
L	(mm)	104	104	104	104	104

Dimensions						
H	Standard	(mm)	200	200	200	200
H1	Option: Hand grip	(mm)	185	185	185	185

Kvs-value						
Kvs-value	(m³/h)	1,7	1,7	1,7	1,7	1,7

Weights						
Fig. 6A2 (approx.)	Standard	(kg)	1,6	1,4	1,6	1,4
	Option: Hand grip	(kg)	1,7	1,5	1,7	1,5

Parts				
Pos.	Sp.p.	Description	Fig. 45.6A2	Fig. 55.6A2
1		Body	P250GH, 1.0460	X6CrNiTi18-10, 1.4541
3	x	Seat	X8CrNiS18-9, 1.4305	
8	x	Assembly stop valve, cpl.	Stainless steel	
8.5		Packing ring	Pure graphite	
8.6		Sleeve nut	X14CrMoS17+QT, 1.4104+QT	
8.7		Sealing ring	Graphite	
8.9		Removable lock washer	X5CrNi18-10, 1.4301	
8.11		Stem	X39CrMo17+QT, 1.4122+QT	
8.15		Fitting	X8CrNiS18-9, 1.4305	
8.16		Stem guiding	X8CrNiS18-9, 1.4305	
8.18		Stem unit	X5CrNi18-10, 1.4301	
8.18.1		Bellows seal	X6CrNiMoTi17-12-2, 1.4571	
14		Banjo bolt	X8CrNiS18-9, 1.4305	
18	x	Thread pin	A2-70	
19	x	Hand wheel	GX5CrNiMo19-11-2, 1.4408	
		Other interior parts	Stainless steel	
	L Spare parts			

Information / restriction of technical rules need to be observed!

Operating and installation instructions can be downloaded at www.ari-armaturen.com.

Resistance and fitness must be verified (contact manufacturer for information, refer to Product overview and Resistance list).



Technology for the Future.
 GERMAN QUALITY VALVES

ARI-Armaturen Albert Richter GmbH & Co. KG, D-33750 Schloß Holte-Stukenbrock,
 Tel. +49 52 07 / 994-0, Telefax +49 52 07 / 994-158 or 159 Internet: <http://www.ari-armaturen.com> E-mail: info.vertrieb@ari-armaturen.com